



**NOTICE OF INTENT TO ADOPT A DRAFT INITIAL
STUDY/MITIGATED NEGATIVE DECLARATION FOR
THE CITY OF HOLTVILLE ALAMO RIVER TRAIL TRESTLE
BRIDGE PROJECT**

DECEMBER 27, 2024

To: All Interested Parties

Subject: **NOTICE OF INTENT TO ADOPT A DRAFT INITIAL
STUDY/MITIGATED NEGATIVE DECLARATION**

Lead Agencies: **City of Holtville**
121 West Fifth Street
Holtville, CA 92250
Contact: Nick Wells, City Manager
(760) 356-2912
NWells@holtvilla.ca.gov

Additional Contact:
George Galvan, Consultant Planner
The Holt Group, Inc.
1601 North Imperial
El Centro, CA 92243
(760) 337-3883
jgalvan@theholtgroup.net

POSTED
DEC 27 2024
Imperial County Clerk-Recorder
California

This notice is to advise responsible and trustee agencies as well as interested parties and those potentially affected by the project that the City of Holtville has prepared a draft Initial Study/Mitigated Negative Declaration (IS/MND) for the Alamo River Trail Trestle Bridge project further specified below. The City has determined that the project will not result in significant environmental impacts with the implementation of the identified mitigation measures.

The draft IS/MND was reviewed and approved for circulation by the Planning Commission of the City of Holtville on December 18, 2024. Upon approval, the draft IS/MND was submitted to the State Clearinghouse and circulated to the public for a 30-day review period beginning on December 27, 2024, and ending on January 27, 2025.

Please send your responses and the name of the contact person to the City of Holtville at 121 W. Fifth Street, Holtville, CA 92250. Certification of the draft IS/MND will be considered by the City of Holtville City Council after the public comment period. A public hearing notice will be

POST FOR 30 DAYS

forwarded to all interested and commenting agencies as well as property owners within 300' of the referenced project area.

- Project Title:** City of Holtville Alamo River Trail Trestle Bridge
- Project Location:** The proposed project site is located within a 5.91-acre parcel, Assessor's Parcel Number (APN) 045-243-005, at the southwest corner of the City of Holtville within the incorporated City limits and above the Alamo River. For more information, refer to Project Location and Vicinity Map, respectively.
- Project Description:** The Alamo River Trail Trestle Bridge was constructed around circa 1904 with a length of about 350 feet, is an open deck bridge consisting of several short spans and is supported by a system of splayed vertical structural elements. A particular feature of this trestle is the apparent composite of both a timber bent system at both ends and a steel space truss system in the middle. The steel truss occupies the mid one-third of the length of the trestle and is bolted with rivet type connections. The steel rails have long been removed by A & K Railroad Materials for salvage use. As such, the remaining transverse timber beams, spaced at about 2 to 3 feet on center, form the current main top surface of the deck. These transverse beams are about 7-1/2 inch wide by 9-1/2 inch deep over the longitudinal wood girders and increase to 9-1/2 by 16 inches over the top chords of the steel truss. On each end of the transverse beams, a 3-foot-wide metal grating sidewalk supported by double cantilevered wood rafters provides access and adds to the total width of the trestle top deck. A set of 3'-6" tall vertical metal angles at about 3' on center are bolted to the tips of the double cantilevers to form a handrail system with horizontal cables. In August of 2009 a fire occurred in the vicinity of the trestle bridge which resulted in significant damage. A 2010 visual review of the trestle bridge found that the deck, support cross beams, grating, railings, and bents were completely damaged and in need of full replacement.
- The trestle bridge rehabilitation will result in the replacement of the damaged structural bent timbers, structural cross beams, and other structural components. More specifically, the trestle bridge rehabilitation will consist of the demolition and replacement of the damaged portions of the bridge (approximately 1,000 square feet), and the installation of 3,500 square feet of bridge decking suitable for non-motorized trail users, 350 linear feet of Americans with Disabilities Act (ADA) compliant bridge railings suitable for pedestrians and bicycles, and 350 square feet of bridge landing suitable for the transition between the bridge and the existing Alamo River Trail. The damaged structures will be replaced with timber, when feasible, to match the nondamaged portion of the bridge and restore the aesthetic appeal of the bridge. The

improvements will result in the repair and conversion of the existing trestle bridge into a multimodal pathway suitable for non-motorized users including pedestrians, bicycles and equestrian traffic.

The project will also include improvements to the existing Alamo River Trail aimed at extending the trail to connect to the trestle bridge walkway. The trail improvements will consist of an 8-foot wide, 12 inch deep, class 2 base trail continuation section from the east edge of the Alamo River Bridge to the existing 8-foot-wide plain cement concrete trail. Additional improvements include trail side amenities consisting of 45,000 square feet of mulch, fifteen (15) trees from fifteen (15) gallon containers, thirty-five (35) each of bushes, shrubs, and grasses, six (6) benches, two (2) informational kiosks, four (4) "No Motor Vehicles" signs, and one (1) funding acknowledgement sign. All proposed landscaping will comply with the State Model Water Efficient Landscape Ordinance (MWELO) and have its own irrigation consisting of drip fittings and tree bubblers.

Digital copies of the draft Initial Study/Mitigated Negative Declaration can be found on the City of Holtville Website at www.holtville.ca.gov. Copies of the draft Initial Study/Mitigated Negative Declaration and referenced information are also available for review at the following locations:

City of Holtville

121 W. Fifth Street
Holtville, CA 92250

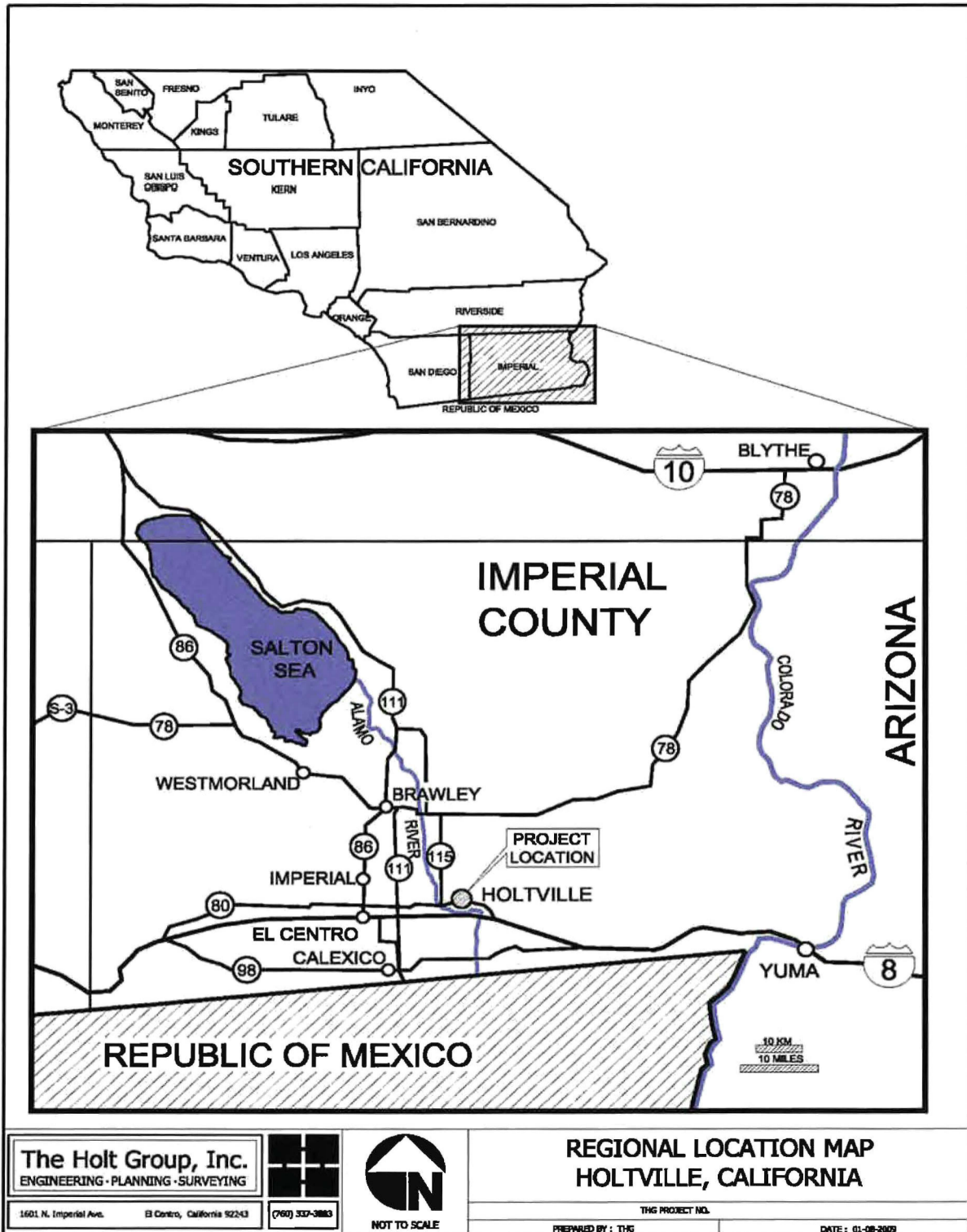
The Holt Group, Inc.

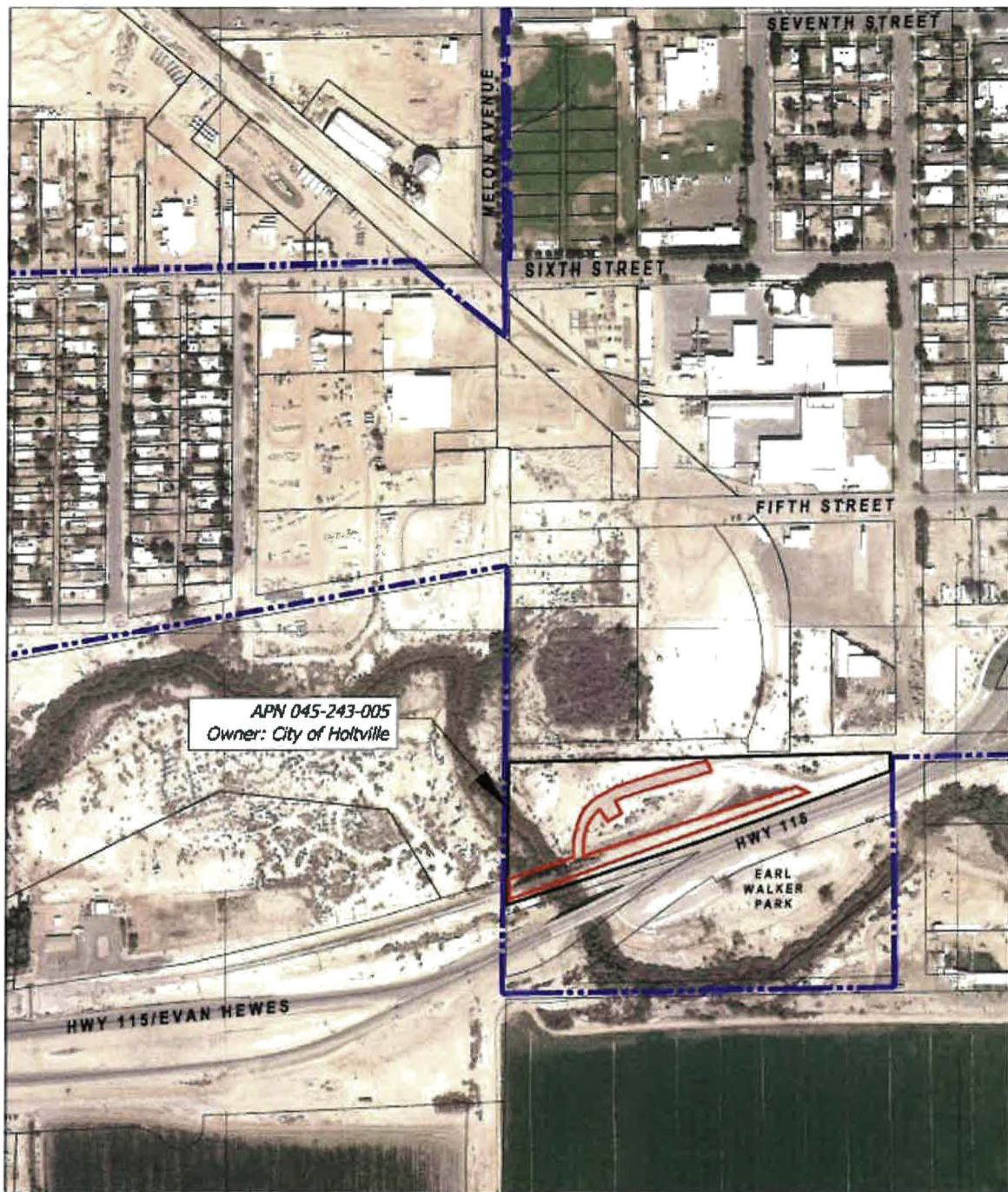
1601 North Imperial Avenue
El Centro, CA 92243

Regards,

A handwritten signature in blue ink, appearing to read "Galvan", with a stylized, cursive script.

George Galvan, AICP
Consultant City Planner





Project Area
 City Limits
 Property Line

The Holt Group, Inc.
ENGINEERING • PLANNING • SURVEYING

1601 N. Imperial Ave. El Centro, California 92243



(760) 337-3083



NOT TO SCALE

ALAMO RIVER
TRESTLE BRIDGE TRAIL
HOLTVILLE, CA

VICINITY MAP

THG Project No. 116.489

Date: 12/06/2024